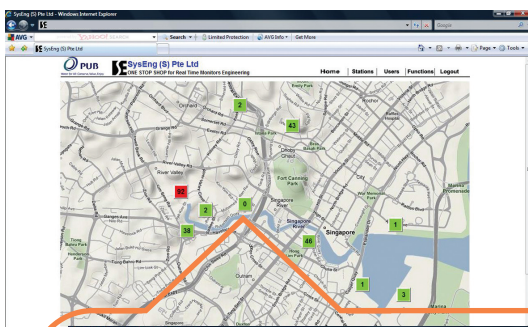


Total Suspended Solid (TSS) Real-time Remote Monitoring

Based on our proven Automatic Real Time Monitoring and Alert System, used in Machine to Machine (M2M) applications since 2000, SysEng has developed a new completely wire-less TSS Monitoring Solution. This brings the real time TSS information from multiple remote stations to the desktop of the user using smart sensors, wire-less and internet technologies. When the TSS readings exceed their limits, SMS alerts are sent out to inform various stakeholders for immediate attention.



Real-Time TSS Monitoring:

- ✓ **Live Data.** Streaming of Live Data & Video from on-site sensor(s) (TSS or additional parameters*) and camera to internet round the clock.
- ✓ **Graphical Overview.** Clear update of entire system status: **Red** = Exceed limits, **Green** = Within normal level
- ✓ **Alert SMS.** Automated SMS alert sending. Pressure



- ✓ **Versatile Sensor configuration.** Configurable to integrate with TSS and various other sensors. Other parameters* includes:

- COD
- BOD
- TOC
- DOC
- BTX

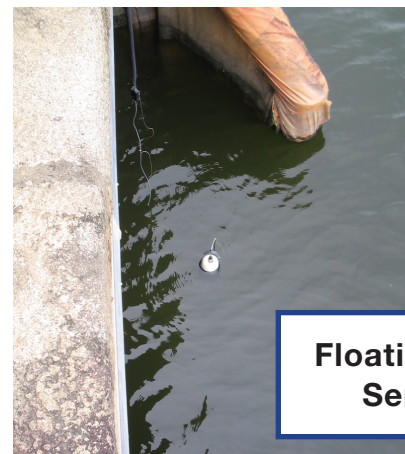
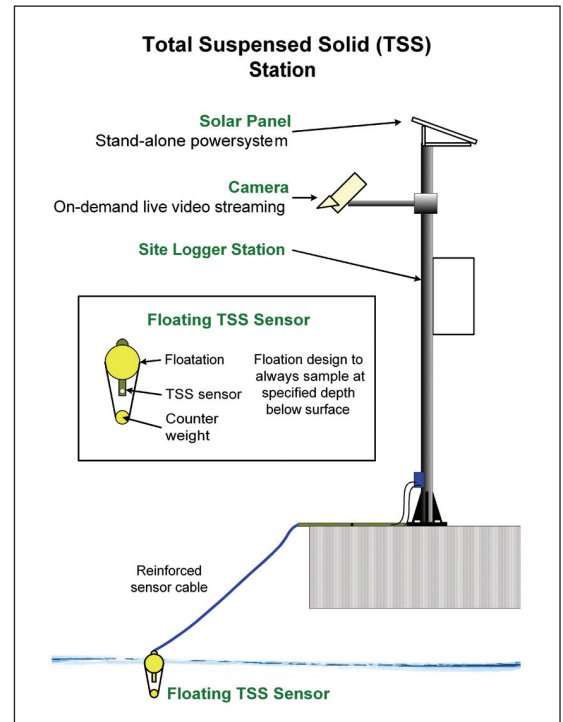
On-Demand Live Video Stream

Live data from on-site sensors (TSS)

* Additional parameters sensors available

System Features

- ✓ Fully automated Real Time Monitoring and Alert System, 24x7.
- ✓ Real-Time, TSS sensor readings of all measuring stations are send to a Central Database periodically (every 5 minutes, configurable) or upon event triggering.
- ✓ TSS sensor measures low concentration mg/L or NTU using back scattering technology of 850nm wavelength.
- ✓ TSS SMS alert limit is software programmable from 50 mg/L and three levels of alerts.
- ✓ Real Time video streaming or snap shot picture mode.
- ✓ Real-time Alert with user- configurable level limits for triggering SMS warning to assigned personnel and different alert levels to different group of users.
- ✓ Secured web-based Real Time TSS readings and Video/Picture monitoring and users are able to access Real-Time data from any station at any time via the Internet.
- ✓ Scalable, capable to add up to 256 measurement stations any time.
- ✓ Measuring station has GPRS/3G with RS232/485 network built-in
- ✓ Latest advanced high efficiency GREEN energy management system in the measuring station to conserve power and use of solar power.
- ✓ Versatile measuring station with compact foot print & solar power without the need of any mains power or wired communication on site. Thus making it simple to deploy and remove.
- ✓ Provide site managers and ECOs with a reliable system to monitor and control sediments discharge from construction sites.
- ✓ Highly cost effective leasing business model such that end-users pay for TSS information and are protected against Technology obsolescence, Expensive investments and Replacement of network infrastructure.
- ✓ System is backed up an experience Field Engineering Team for support



Floating TSS Sensor



**S::CAN
COD/BOD
Sensor**